

PDCL Antibody
Catalog # ASC11819**Specification**

PDCL Antibody - Product Information

Application	WB, E
Primary Accession	Q13371
Other Accession	NP_005379 , 88758594
Reactivity	Human, Mouse, Rat
Host	Rabbit
Clonality	Polyclonal
Isotype	IgG
Calculated MW	Predicted: 33 kDa
Application Notes	Observed: 35 kDa KDa PDCL antibody can be used for detection of PDCL by Western blot at 1 - 2 µg/ml.

PDCL Antibody - Additional Information

Gene ID 5082

Target/Specificity

PDCL; PDCL antibody is human, mouse and rat reactive. At least two isoforms of PDCL are known to exist. PDCL antibody is predicted to not cross-react with other members of the PDCL protein family.

Reconstitution & Storage

PDCL antibody can be stored at 4°C for three months and -20°C, stable for up to one year.

Precautions

PDCL Antibody is for research use only and not for use in diagnostic or therapeutic procedures.

PDCL Antibody - Protein Information**Name** PDCL**Synonyms** PHLOP1, PhLP1**Function**

Acts as a positive regulator of hedgehog signaling and regulates ciliary function. [Isoform 2]: Acts as a negative regulator of heterotrimeric G proteins assembly by trapping the preloaded G beta subunits inside the CCT chaperonin.

Cellular Location

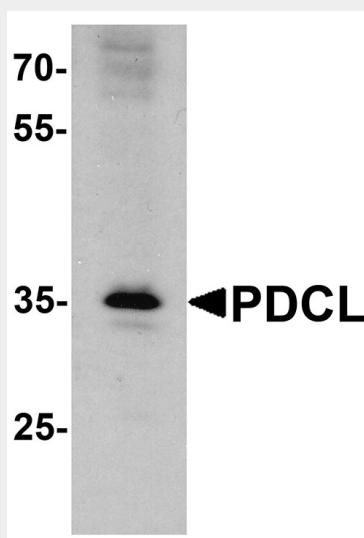
Cell projection, cilium {ECO:0000250|UniProtKB:Q9DBX2}

PDCL Antibody - Protocols

Provided below are standard protocols that you may find useful for product applications.

- [Western Blot](#)
- [Blocking Peptides](#)
- [Dot Blot](#)
- [Immunohistochemistry](#)
- [Immunofluorescence](#)
- [Immunoprecipitation](#)
- [Flow Cytometry](#)
- [Cell Culture](#)

PDCL Antibody - Images



Western blot analysis of PDCL in K562 cell lysate with PDCL antibody at 1 µg/ml.

PDCL Antibody - Background

Phosducin-like proteins (PhLPs) are a conserved family of proteins with thioredoxin-like domains that were initially identified as modulators of G protein signaling (1,2). PDCL is widely expressed in normal human tissues and may participate directly in the regulation of calcium-evoked exocytosis in adrenal medullary chromaffin cells (3). It is an ethanol-responsive modulator of heterotrimeric G proteins (4).

PDCL Antibody - References

- Miles MF, Barhite S, Sganga M, et al. Phosducin-like protein: an ethanol-responsive potential modulator of guanine nucleotide-binding protein function. *Proc. Natl. Acad. Sci. USA* 1993; 90:10831-5.
- Ruiz-Gomez A, Humrich J, Murga C, et al. Phosphorylation of phosducin and phosducinlike protein by G protein-coupled receptor kinase 2. *J. Biol. Chem.* 2000; 275:29724-30.
- Gensse M, Vitale N, Chasserot-Golaz S, et al. Regulation of exocytosis in chromaffin cells by phosducin-like protein, a protein interacting with G protein betagamma-subunits. *FEBS Lett.* 2000; 480:184-8.
- Barhite S, Thibault C, Miles MF, et al. Phosducin-like protein (PhLP), a regulator of G beta gamma function, interacts with the proteasomal protein SUG1. *Biochim. Biophys. Acta* 1998; 1402: 95-101.